



INSTALLATION INSTRUCTIONS

MOSMAN (PILLAR PARCEL BOX)

LOOSE PARTS: 2x spacing washers (in case of gaps at bolt down points), floor mat, 4x galvanised sleeve anchors 8mm dia., combination lock if selected.



Gal washers



Floor mat



Sleeve anchors



Comb lock (opt.)

PREPARATION AND SET OUT:

Prepare a solid, level surface at least 450 x 450mm, at least 20mm above the planned maximum soil level. Ensure at least 400mm clear space behind the parcelbox for door swing, and nothing taller than 145mm, which is the height of the bottom of the rear door.

Foundation method A: The best way: Mount on a level concrete base. To create a base, dig a hole at least 75mm deep, approx 500 x 500 mm. If on clay soil there is a risk of tilting due to water reaching under the concrete, which causes expansion/compaction/shrinkage cycles leading to tilting, so deeper is better. Approx. 300mm depth is desirable, and on completion you must backfill and compact around the concrete using clay not sand.

Build a level formwork around the perimeter if required.

Mix and pour the concrete per the supplier's instructions. Level it off. Ideally cover in plastic, then wait for it to cure (7 days is typical) before drilling holes.

Foundation method B: The quickest way: Mount on a large paver, min. 450 x 450mm.

This method is not as secure, and may require re-levelling over time as the soil moves, especially clay soils. Select a paver at least 450 x 450mm, preferably

50mm thick. Dig a shallow hole with level floor, compact the base, preferably using fine crushed rock and install the paver level, using a spirit level. (Alternatively, dig a hole and bed the paver into rapid set concrete, but work quickly as it can set before you get the paver level.)

INSTALLATION (two options)

(i) Installation Using Polyurethane adhesive, silicone or MS (T-Rex etc.):

These photos show the option of using large tiles to level and raise the base with daubs of adhesive underneath. Trial fit the pillar and mark the final position.

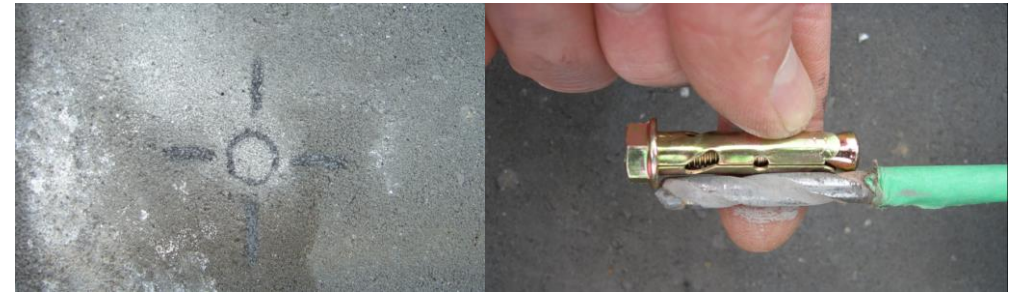


Invert the pillar onto the clean plastic shipping bag and apply a thick bead of adhesive around the base. Do not leave any gaps.

Clean your hands, then lift the pillar into position. Use an assistant if possible.

Firm it down into position. Stop when or if adhesive starts squeezing out.





3. Apply tape to the 8mm masonry drill bit as a depth marker.
4. Drill the four holes and clear the dust from the holes.
5. Re-position the mailbox over the holes. Fill any gaps under the feet with the spacer washers and align with a centre punch or pointed tool.
6. Insert all four sleeve anchors fully into the holes, tapping down if required. Tighten them. A cordless driver/drill can help them “bite” if they are spinning in their holes.

(ii) If using supplied galvanised sleeve anchors:

1. Check the nuts move freely down the thread. If not, work them or lube thread.
2. Place the unit on the slab and mark the holes in the base flange. Add cross hair marks as a drilling reference.



7. It's a good idea to neatly caulk/seal the outer edge of the pillar to the concrete base, to seal water out.
8. Place the shock absorbing mat on the floor. If desired, the floor level can be raised by stacking bricks under the floor mat.
9. If using a combination lock, install the lock as per the separate instructions.
10. Check operation. Lock the rear door and provide the keys, owners instructions and labels to the owner.